

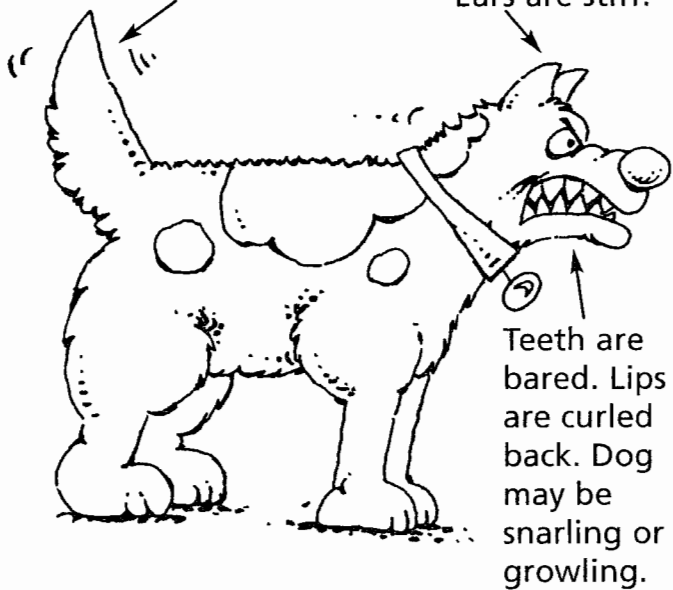
What Is This Dog Telling You?

Permission granted to classroom teachers to duplicate for classroom use. Reproduction by others for any purpose is prohibited without written permission from NAHEE. © 2002 NAHEE, P.O. Box 362, East Haddam, CT 06423. www.nahee.org

1

Tail is held high and stiff and may be wagging.

Ears are stiff.

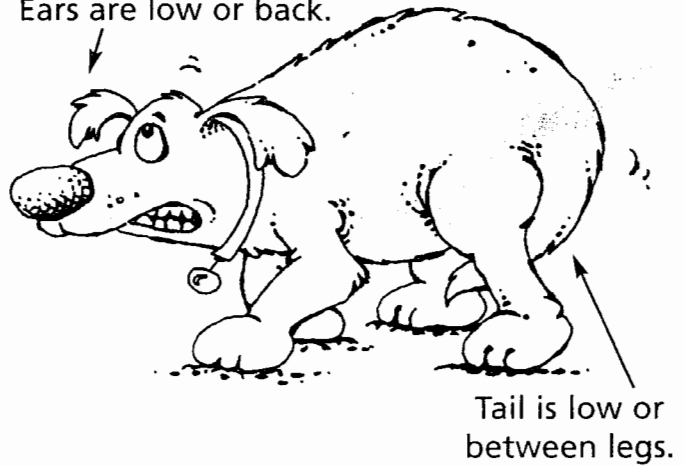


Teeth are bared. Lips are curled back. Dog may be snarling or growling.

2

Body may be shaking or close to the ground.

Ears are low or back.

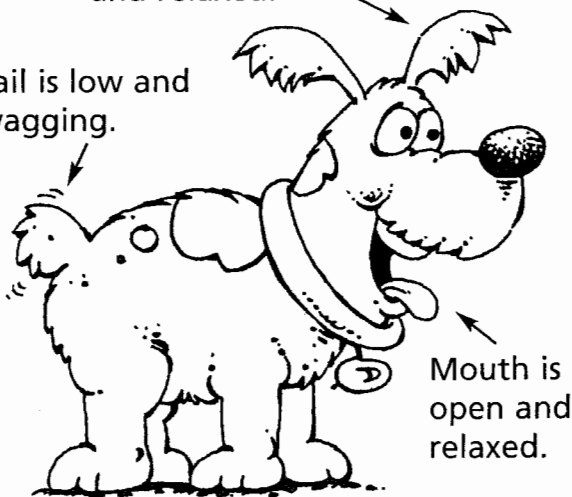


Tail is low or between legs.

3

Ears are forward and relaxed.

Tail is low and wagging.

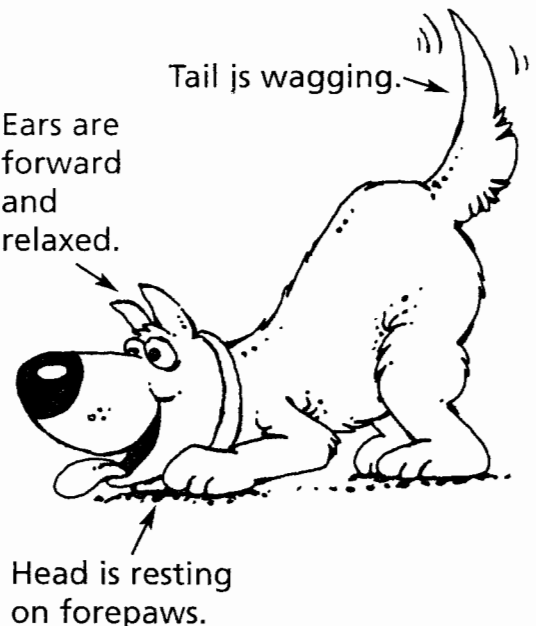


Mouth is open and relaxed.

4

Tail is wagging.

Ears are forward and relaxed.



Head is resting on forepaws.